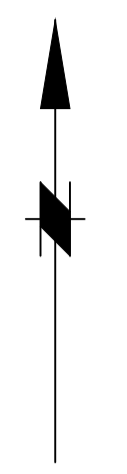
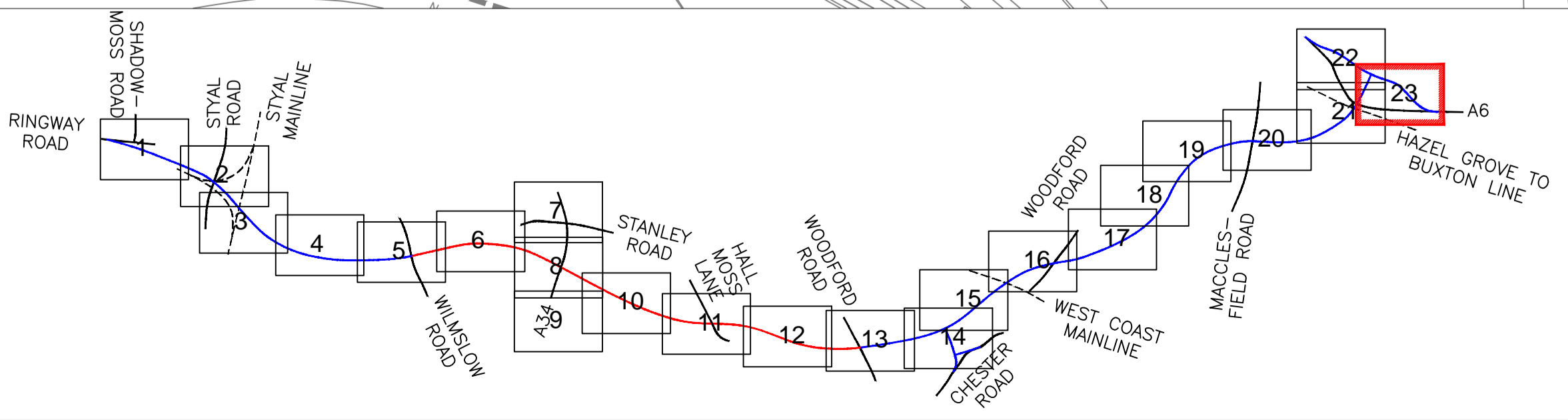
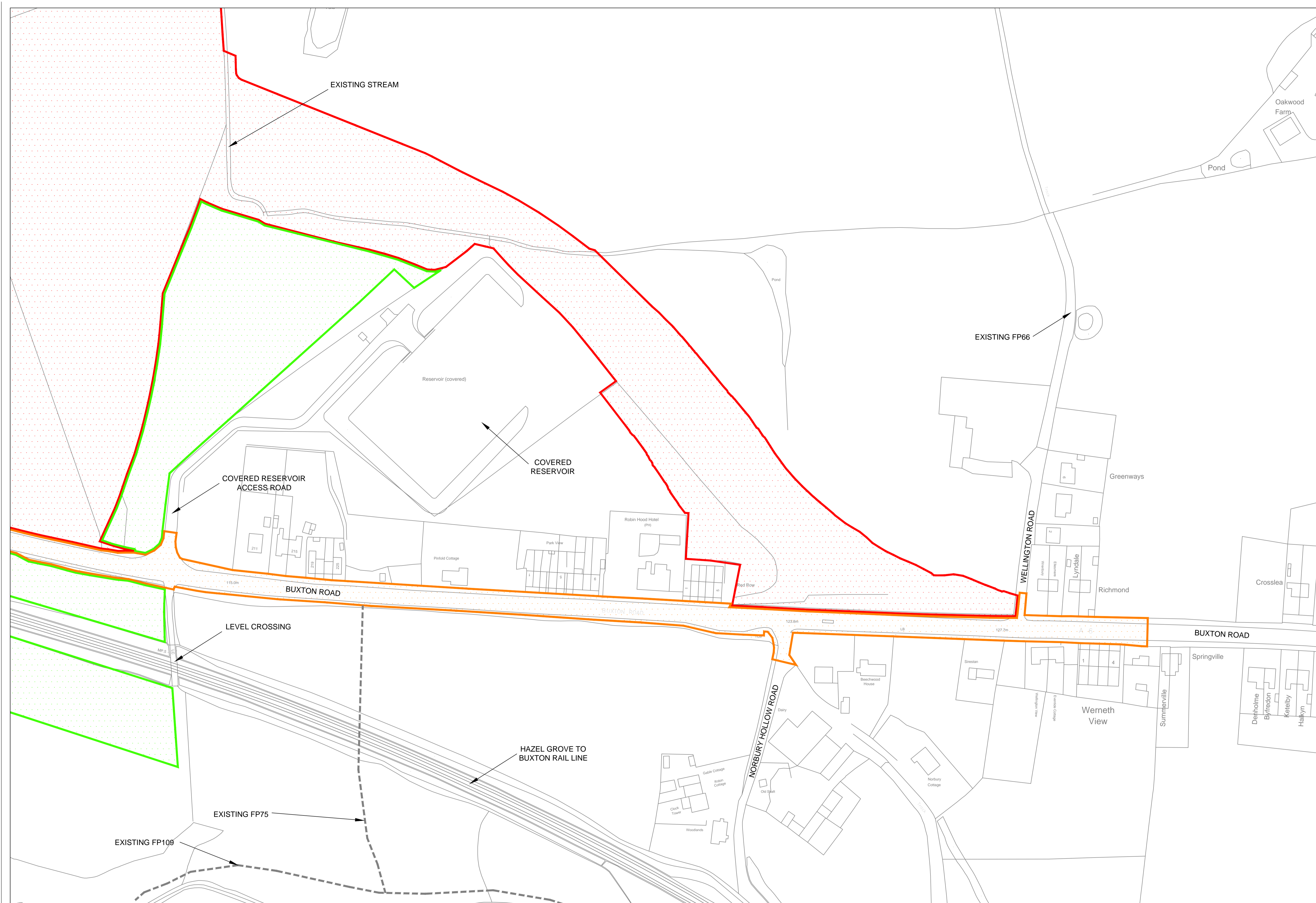


This map is reproduced from Ordnance Survey material with the permission of Ordnance Survey on behalf of the Controller of Her Majesty's Stationery Office. © Crown copyright. Unauthorised reproduction infringes Crown copyright and may lead to prosecution or civil proceedings. Stockport Metropolitan Borough Council 100019571 2012



- LAND REQUIRED FOR THE SCHEME (PERMANENT)
- LAND REQUIRED FOR THE SCHEME (TEMPORARY) MATERIAL STORAGE/COMPOUNDS/WORKING SPACE ETC
- LAND REQUIRED FOR THE SCHEME (EASEMENT)
- EXISTING LOCAL AUTHORITY LAND REQUIRED FOR THE SCHEME



| Rev. | Drawn | Checked | Date | Revision Details |
|------|-------|---------|------|------------------|
| | | | | |

www.semmms.info

Jfm McMahon BSc. C.Eng. MCE
 SERVICE DIRECTOR, MAJOR PROJECTS

STOFFORD HOUSE
 STOCKPORT SK9 3YE
 TEL : 0161 474 4351
 FAX : 0161 474 4633

Job Title
A6 - MANCHESTER AIRPORT RELIEF ROAD

Drawing Title
PLANNING APPLICATION BLOCK PLAN EXISTING SHEET 23

| | | | |
|---|------------------|------------------|------------------|
| Drawn SEB/DP | Engineer SP | Checked NH | Approved AB |
| Date 03.10.13 | Date 03.10.13 | Date 03.10.13 | Date 03.10.13 |
| Size A1 | Scale 1:1000 | | |
| SCG No. | Filename | | |
| Drawing No. 1007/3D/DF7/A6-MA/PABP/E/022 | Revision | | |